



Setu™ Chairs



Setu™ is now.

Designed for where you want to sit,
Setu gives instant comfort in all
applications. Comfortable, adaptable
and simple.



**The only chair with
a kinematic spine.**

The core of Setu is the Kinematic Spine™, a combination of two simple polypropylene materials that are precisely engineered to achieve instant comfort. You are fully supported the moment you sit down, and the spine bends and flexes to your every move. With no tilt mechanism and only one adjustment (height), chair components are minimised.



7.5

The Setu chair is designed in partnership with Herman Miller by Studio 7.5 from Berlin, Germany. The same team responsible for the ground-breaking ergonomic chair, Mirra.

“Beauty is not only what you see,
it’s also what you feel.”

Studio 7.5



For how we work now.

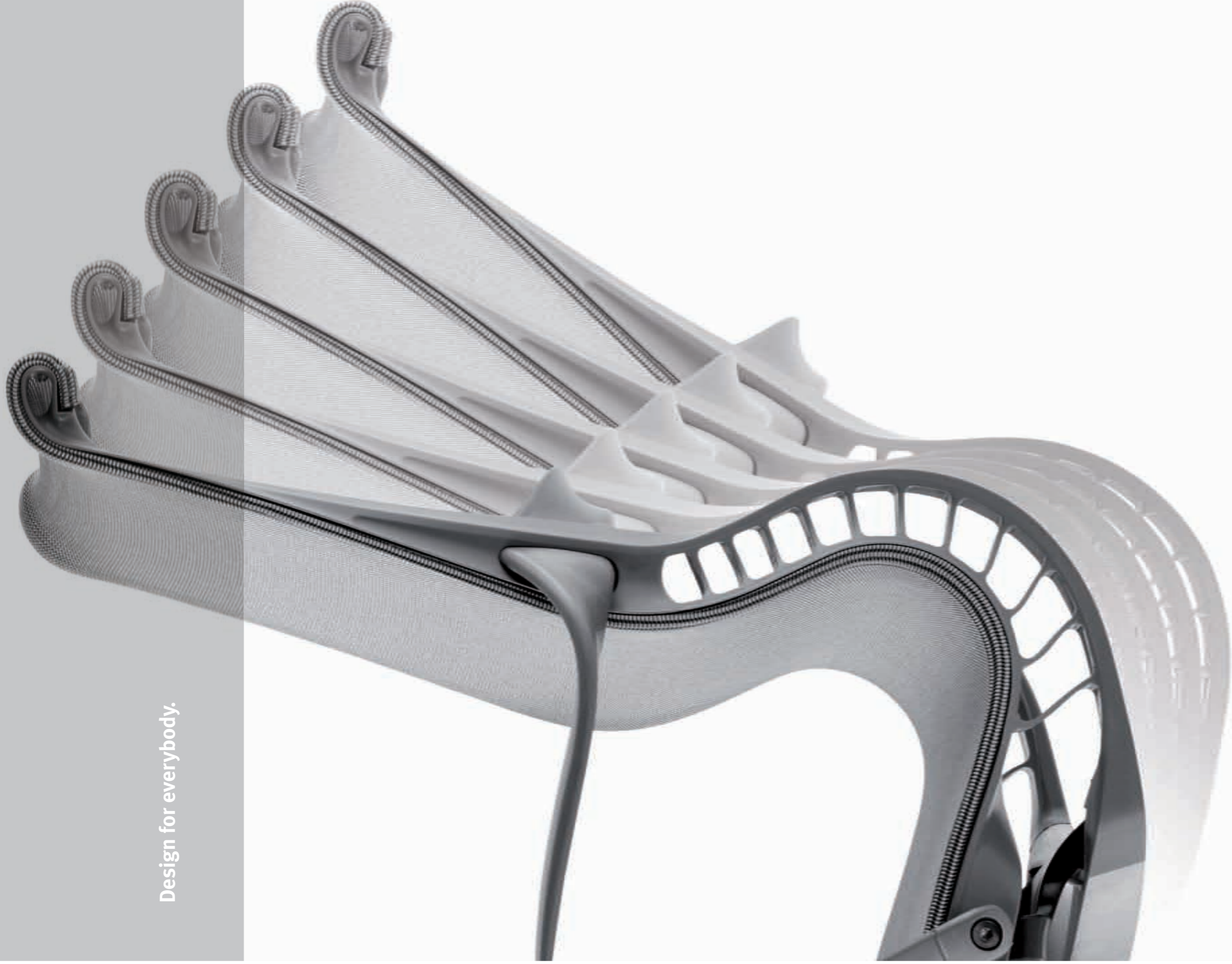
The Setu offering currently includes a 5-star, 4-star, and lounge and ottoman. Setu is designed for where you want to sit, from touch down spots, collaboration areas to meeting spaces.



Supporting the team.



Design for everybody.



Team spirited. Individually focused.



Simplicity and comfort at work.



Design in detail.



Break out and be creative.



At home in the office. Or the office at home.



Design for the environment.

Setu contains only the materials needed and not a molecule more. Less chair means less time, cost and energy needed to build it. Setu is McDonough Braungart Design Chemistry (MBDC) Silver Cradle to Cradle certified, ensuring that it is made of safe materials and recycled content. Setu is also GREENGUARD certified.





Design for you.

Colours, materials and finishes.

The spine works together with the new Lyris™ elastomer seat suspension, which stretches in every direction to distribute weight evenly, conform to your contours, and provide aeration.

Honesty and innovation in materials are the foundations of design at Herman Miller, and they are hallmarks of Setu. Every detail is driven by function. From the composite Kinematic Spine, to the elastomer seat-suspension, to the H-Alloy aluminium base that requires no finish, Setu provides comfort and durability in an elegant design.

Seat & Back

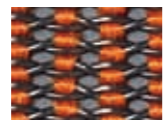
Lyris



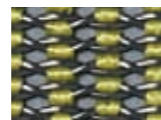
White*
8X01



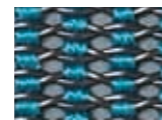
Alpine
4W01



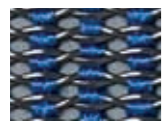
Mango
4W02



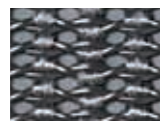
Chartreuse
4W03



Peacock
4W04



Berry Blue
4W05



Slate Grey
4W06



Navy
4W07



Chino
4W08



Rattan
4W09



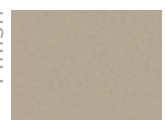
Java
4W10



Graphite
4W11

Frame

Finish



Chino
JH



Graphite
G1



Java
5B



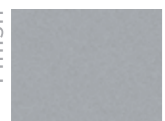
Slate Grey
SG



Studio White
98

Base

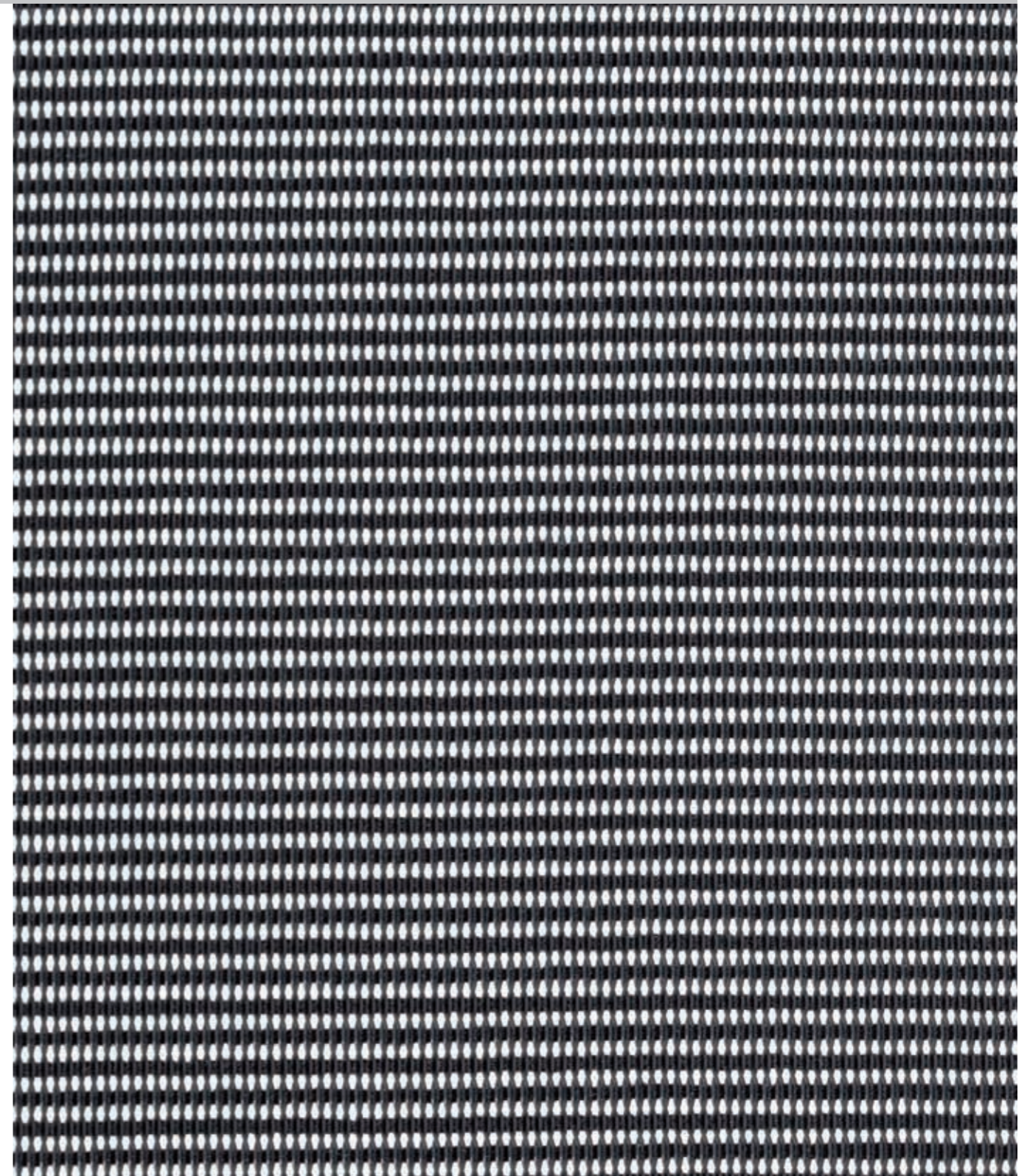
Finish



H-Alloy
L7

*Note: Be aware that Lyris White suspension material will show dirt and discolour from contact with darker clothing, including denim; cleaning may not be successful. It is not covered under Herman Miller's warranty for discolouration. Lyris White is available only with Studio White (98) frame finish.

Samples are representative of the material to be supplied and may not indicate an exact match; some variation may occur.




See the “Making of Setu.”
at: www.hermanmiller.com/setu



“Setu. You ain’t seen nothing yet.”

PB1696

Herman Miller and  are registered trademarks of Herman Miller, Inc.
Setu is a trademark of Herman Miller, Inc.